

Sleeping Cat Software

Relax and enjoy!

<http://www.sleepingcatsoftware.com/>

Thanks for trying **Check Mail During the Day!**

What Is It?

It is an AppleScript that works with Qualcomm's Eudora mail program to periodically check your mail during the day (as shipped, defined as 9:00 AM to 5:00 PM). Weekends are excluded by default.

Why?

Good question! Suppose you have Eudora set to check your mail every five minutes. It will do this ALL day. Now suppose you use an energy saver to spin down your drive. If Eudora is frequently retrieving mail (as it might if you are on a lot of mailing lists), your disk may never spin down, or may constantly spin up and down.

Besides energy saving issues, you may only care about getting mail if you're there to read it, so I wrote this script to check mail only during certain hours. This is user-configurable (see below).

The script will only work if Eudora is running, and does **not** launch Eudora if it is not running.

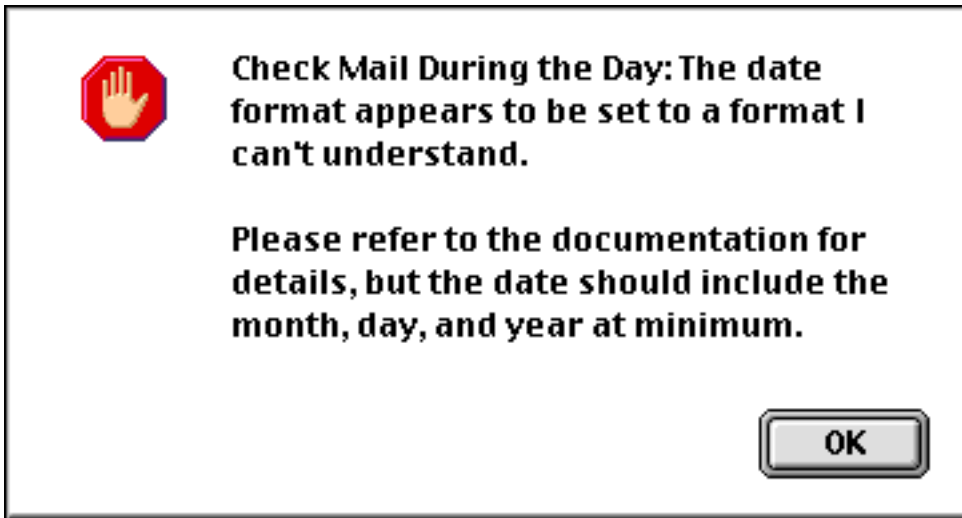
This script is most useful when set as a startup item. To do this, make an alias to the script, and place it in the Startup Items folder of your System folder.

Notes on Eudora Settings:

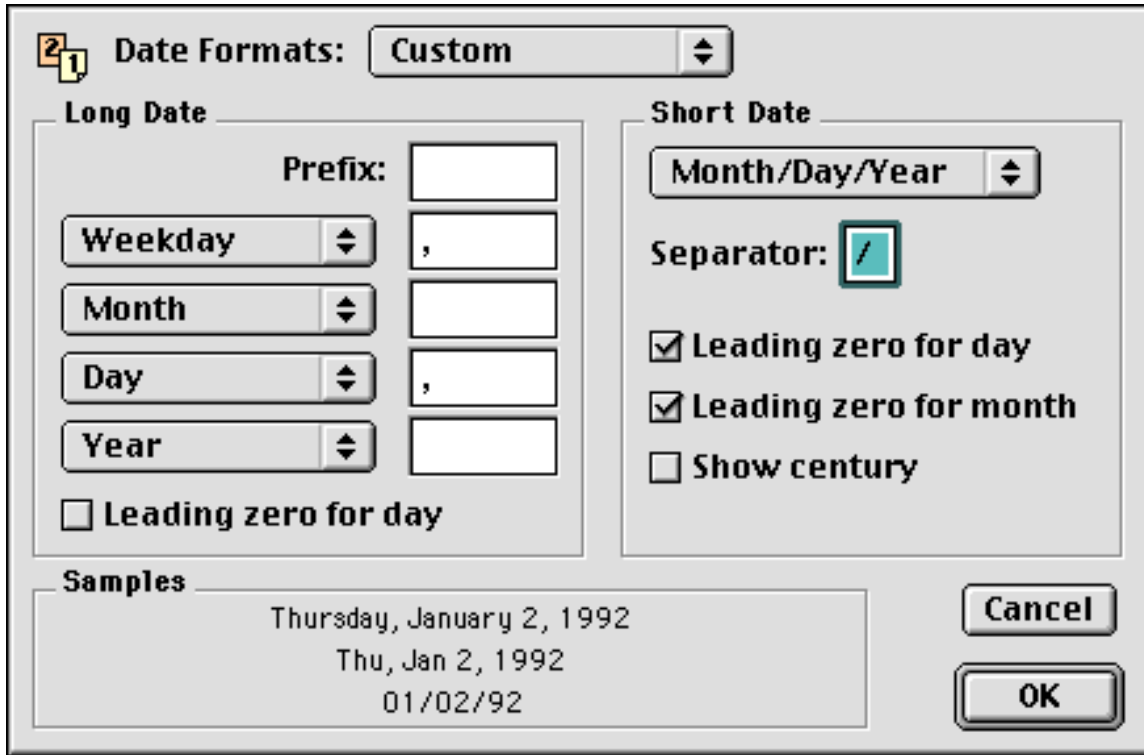
- You should have Eudora **not** set to automatically check mail, as this script will take care of that.
- For convenience, you may wish to activate the Eudora setting that sends outgoing mail when mail is checked.
- If you feel comfortable doing so, you may want to configure Eudora to remember your password.

Tips

Check Mail During the Day uses the system date format when it is checking whether to run. Through the Date & Time control panel, you can extensively customize this format, but for the script to function, the long date string should include at least the month, day, and year. If it does not, you may see this alert:



To correct this, open the Date & Time control panel, and modify the long date settings as above. Here is how my system is set:



Customizing

There are things you can tweak in the script. See the following lines:

```
property activeStartTime : " 09:00 AM"  
property activeStopTime : " 05:00 PM"  
property eudoraCreator : "CSOm" -- creator type of Eudora  
property minutesBetweenChecks : 5 -- check mail every five minutes  
property workingOnTheWeekend : false -- whether this script is active on Saturday and Sunday
```

`activeStartTime` defines the time to start checking. The leading space is significant. Similarly, `activeStopTime` defines when to stop checking. If you would like the script active all the time, set the start time to 12:00 AM and the stop time to 11:59 PM.

`eudoraCreator` is the creator type for Eudora. You shouldn't need to change it. The script uses it to check if Eudora is running.

`minutesBetweenChecks` defines the number of minutes to wait between mail checks.

`workingOnTheWeekend` is a boolean flag indicating whether the script is active on Saturday and Sunday. The default is false, but set it to true if you want mail checked on the weekend. The same start and stop time apply as during the week.

What Do I Need?

- AppleScript. See <http://www.applescript.apple.com/> for general AppleScript information.
- MacOS 7 or higher. See <http://www.macos.apple.com/>
- An AppleScript script editor, if you wish to customize the script. Apple's editor, Script Editor, is distributed with AppleScript. Other editors are available; one source to check for these is Developer Depot at <http://www.devdepot.com/>.
- Eudora. See <http://www.eudora.com/>.

Legal Stuff and License

Check Mail During the Day is distributed as freeware, which simply means that no fee is due, and is Copyright © Richard Long 1997-2000. Your use is governed by the following license agreement. If you do not agree with it, you may not use the Software.

LICENSE AGREEMENT

Ownership

Use of this Software is licensed, and ownership of the Software remains with Sleeping Cat Software, which reserves all rights not expressly granted to you.

Use and Distribution

You may freely use this program on any number of computers. You may not resell it for profit. You may not distribute it. If you represent a user group and would like to include this product in a shareware compilation, please contact Sleeping Cat Software for permission.

You may not reverse-engineer, modify, or create derivative works based on the Software or any part of it.

If you give this Software to anyone, the complete Software distribution package, including this documentation, must be included and unmodified.

Termination

This License is effective until terminated. You may terminate this License at any time by destroying the Software and related documentation and all copies thereof in your possession. This License will terminate immediately without notice from Sleeping Cat Software if you fail to comply with any provision of this License. Upon termination you must destroy the Software and related documentation and all copies thereof in your possession.

Release of Liability

While reasonable effort has been made to ensure this Software operates substantially as described, Sleeping Cat Software cannot guarantee proper operation in every possible configuration. The Software is provided "**as is.**" You assume full responsibility for evaluating the Software and determining its suitability for use. In no event will Sleeping Cat Software be liable to you for any damages of any kind arising from the use of, or inability to use, this Software, even if Sleeping Cat Software has been advised of the possibility of such damages. Sleeping Cat Software's entire

liability and your exclusive remedy shall be return of the price you paid to Sleeping Cat Software for the Software.

Version History

11/97 v1.0 First public release.

06/98 v1.1 Added script check for proper system date format, and added relevant section to the documentation.

12/98 v1.1.1 Updated contact information.

9/2000 v1.1.2 Updated information for Sleeping Cat Software.